



# EUROIMMUN Infection diagnostics

## Product overview



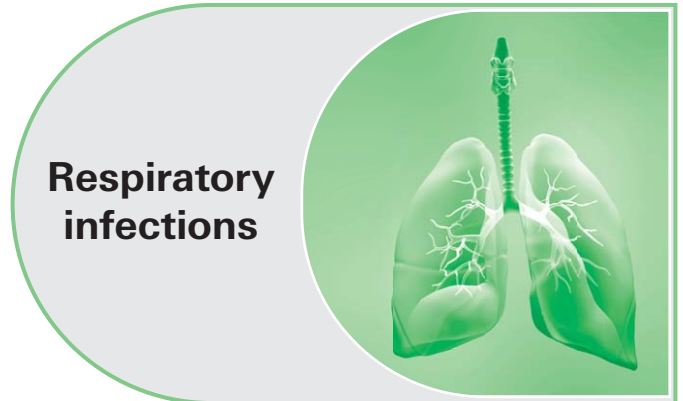
**Emerging  
diseases**



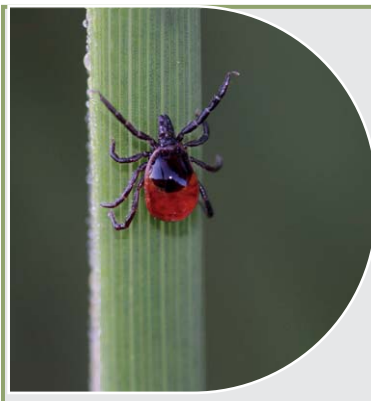
**Childhood  
diseases**



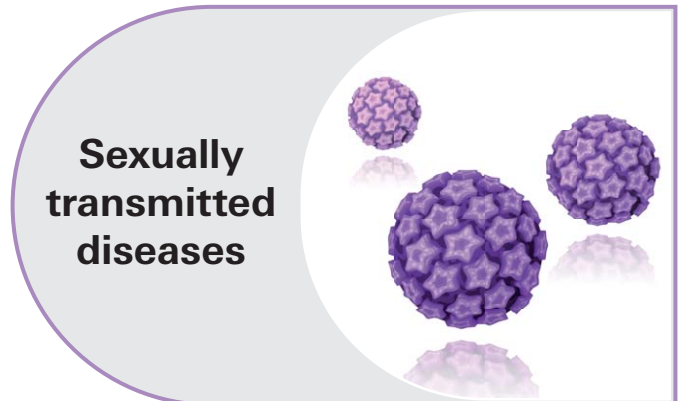
**Gastro-  
intestinal  
infections**



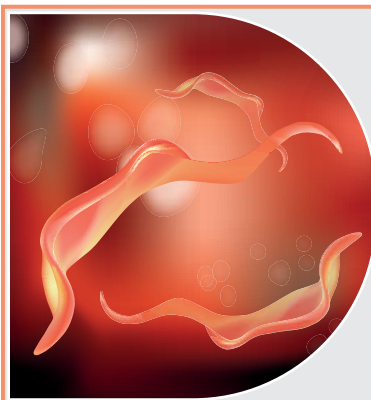
**Respiratory  
infections**



**Tick-borne  
infections**



**Sexually  
transmitted  
diseases**



**Parasitic  
infections**



**Pregnancy-  
relevant  
infections**

# Product overview: Infection diagnostics

## Direct detection of infectious agents

Detection of	Antigen ELISA	PCR	Micro-array	Detection of	Antigen ELISA	PCR	Micro-array
Adenovirus A-G			■	<i>Mycobacterium tuberculosis</i>		■	
<i>Aspergillus</i>	■			<i>Mycoplasma genitalium</i>			■
Bocavirus 1-4			■	<i>Mycoplasma hominis</i>			■
<i>Chlamydia trachomatis</i>			■	<i>Neisseria gonorrhoeae</i>			■
Coronavirus (229E, NL63, HKU-1, OC43)			■	Parainfluenza virus 1-4			■
CXCL13	■			Parechovirus			■
Dengue virus NS1	■			Respiratory syncytial viruses A and B (RSV)			■
Dermatophytes (n=23) <sup>1</sup> and yeast/moulds (n=6) <sup>2</sup>			■	SARS-CoV-2		■	■
<i>Haemophilus ducreyi</i>			■	<i>Treponema pallidum</i>			■
Herpes simplex virus (HSV-1/2)		■	■	<i>Trichomonas vaginalis</i>			■
Human enterovirus/rhinovirus			■	<i>Ureaplasma parvum</i>			■
Human papillomavirus (HPV)			■	<i>Ureaplasma urealyticum</i>			■
Influenza virus type A and B		■ <sup>3</sup>	■	Varizella zoster virus (VZV)			■
Metapneumovirus			■	Zika virus		■	

## Detection of antibodies against infectious agents

Detection of	ELISA	Blot	IIFT	ChLIA	Detection of	ELISA	Blot	IIFT	ChLIA
Adenovirus	■				<i>Legionella pneumophila</i>	■		■	
<i>Bartonella</i>			■		<i>Leishmania donovani</i>			■	
<i>Bordetella</i> FHA	■	■			<i>Listeria monocytogenes</i>			■	
<i>Bordetella pertussis</i> toxin	■	■			Mayaro virus	■			
<i>Borrelia</i>	■ <sup>4</sup>	■ <sup>4</sup>	■	■	Measles virus	■ <sup>4, 5</sup>			
<i>Brucella abortus</i>	■				MERS-CoV	■			
<i>Campylobacter jejuni</i>	■				Mumps virus	■ <sup>4</sup>			
Chikungunya virus	■		■		<i>Mycoplasma hominis</i>			■	
<i>Chlamydia pneumoniae</i>	■	■	■		<i>Mycoplasma pneumoniae</i>	■		■	
<i>Chlamydia psittaci</i>		■	■		Parainfluenza virus	■			
<i>Chlamydia trachomatis</i>	■	■	■		Parvovirus B19	■	■		
<i>Coxiella burnetii</i> phase 1	■				<i>Plasmodium</i>	■			
<i>Coxiella burnetii</i> phase 2	■				Respiratory syncytial virus (RSV)	■			
Coxsackievirus			■		Rubella virus	■ <sup>4, 5</sup>	■		
Crimean Congo fever virus	■				Sandfly fever virus	■ <sup>6</sup>		■	
Cytomegalovirus (CMV)	■ <sup>4, 5</sup>	■			SARS-CoV-2	■ <sup>7</sup>	■		■
Dengue virus	■		■		<i>Schistosoma</i>	■		■	
Diphtherie toxoid	■				<i>Strongyloides</i>	■			
<i>Echinococcus</i>	■	■			TBE virus	■ <sup>4</sup>		■	
Enterovirus	■				Tetanus toxoid	■			
Epstein-Barr virus (EBV)	■ <sup>4, 5</sup>	■	■ <sup>5</sup>	■	<i>Toxocara canis</i>	■	■		
Hanta virus	■	■	■		<i>Toxoplasma gondii</i>	■ <sup>4, 5</sup>	■	■	
<i>Helicobacter pylori</i>	■	■			<i>Treponema pallidum</i>	■ <sup>4</sup>	■	■	
Hepatitis E virus	■	■			<i>Trypanosoma cruzi</i>	■			
Herpes simplex virus 1 (HSV-1)	■	■		■	<i>Ureaplasma urealyticum</i>			■	
Herpes simplex virus 2 (HSV-2)	■	■		■	Usutu virus	■			
Herpes simplex virus (HSV-1/2)	■ <sup>4</sup>	■			Varizella zoster virus (VZV)	■ <sup>4, 5</sup>	■	■	
Human herpesvirus 6 (HHV-6)			■		West Nile virus	■ <sup>5</sup>		■	
Influenza virus type A	■				Yellow fever virus			■	
Influenza virus type B	■				<i>Yersinia enterocolitica</i>	■	■		
Japanese encephalitis virus	■		■		Zika virus	■		■	

<sup>1</sup>Anthropophilic: *T. tonsurans*, *T. interdigitale*, *T. schoenleinii*, *T. concentricum*, *T. rubrum*, *T. violaceum*, *E. floccosum*, *M. ferrugineum*, *M. audouinii*; Zoophilic: *T. equinum*, *T. mentagrophytes*, *T. simii*, *T. quinckeanum*, *T. erinacei*, *T. bullosum*, *T. benhamiae*, *T. verrucosum*, *T. eriotrephon*, *M. canis*, *N. persicolor*, Geophilic: *N. fulva*, *N. gypsea*, *N. incurvata*; <sup>2</sup>*C. albicans*, *C. guilliermondii*, *C. parapsilosis*, *F. oxysporum*, *F. solani*, *Sc. brevicaulis*; <sup>3</sup> only available in combination with SARS-CoV-2 PCR; <sup>4</sup> also available for CSF diagnostics; <sup>5</sup> also available as avidity test; <sup>6</sup> only Toscana virus available; <sup>7</sup> also available: ELISA-based interferon gamma release assay (IGRA)