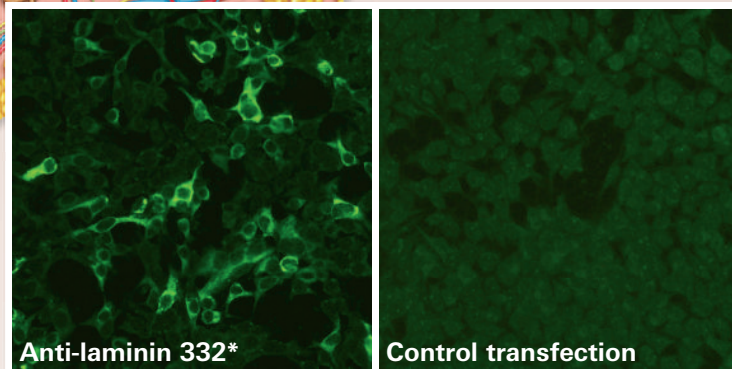
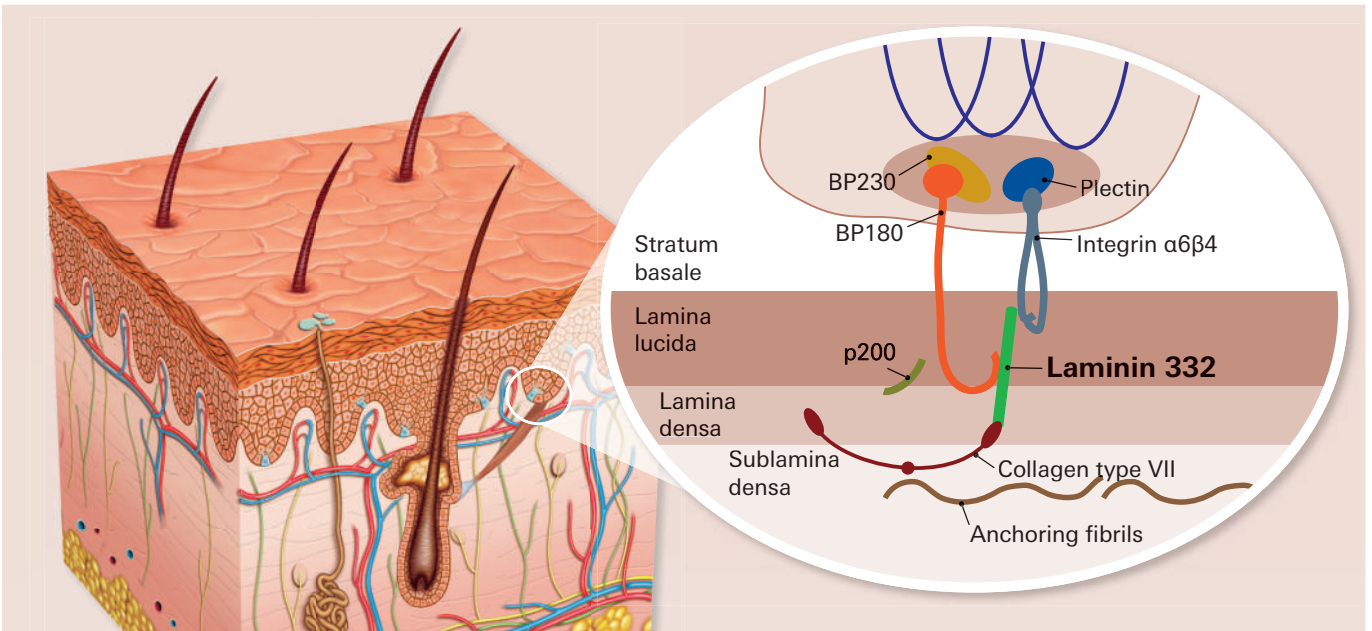




# Diagnosics of mucous membrane pemphigoid

## Detection of antibodies against laminin 332



\* transfected cells



Anti-Laminin 332 (LAM332) IIFT

FA150b-1005-50

Exclusive from  
EUROIMMUN!

References:

1. Goletz S *et al.* A sensitive and specific assay for the serological diagnosis of antilaminin 332 mucous membrane pemphigoid. *Br J Dermatol.* 180(1):149-156 (2019)
2. Schmidt E *et al.* European Guidelines (S3) on diagnosis and management of mucous membrane pemphigoid, initiated by the European Academy of Dermatology and Venereology – Part II. *J Eur Acad Dermatol Venereol* 35(10):1926-1948 (2021).